



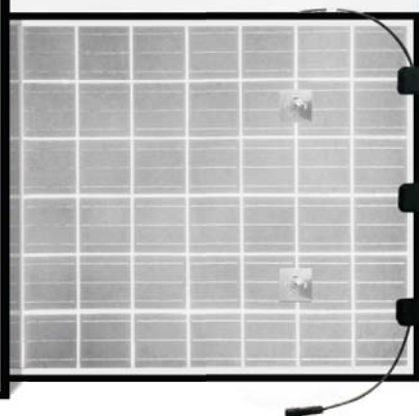
BYD P6C-30-DG Series-3BB

245W 250W 255W 260W 265W



BYD 430 PV Game Changer

- 4 - Longer service time up to 40 years.
- 3 - The minimal annual power degradation could reach 0.3%
- 0 - PID free & snail cracks free.



2nd General BYD Double Glass Module



More Profitable

- The minimal annual power degradation could reach 0.3%
- Higher return on investment
- Longer service time up to 40 years
- Easier installation design
- Higher system voltage
- Lower balance of system cost



More Durable

- Unique design and material to minimize micro-cracks
- Longer service time up to 40 years



More Efficient

- No UV cut off
- Higher power output



More Reliable

- PID free & snail cracks free.
- Stable encapsulating material



Average cell efficiency up to 17.8%
Excellent optical performance



Positive tolerance 0~5W
Reliability for output performance



12 Years 12 years for product
30 years linear Warranty



Residential roof top systems
On/Off-grid commercial systems
On/Off-grid utility systems

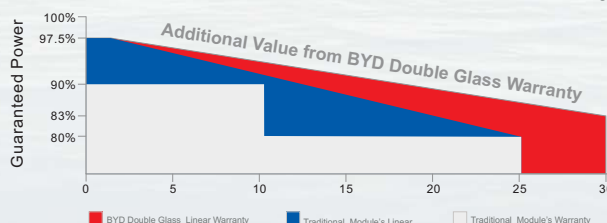


5400Pa for Snow Load Test
2400Pa for Wind Load Test



IEC 61215(Edition 2005), IEC 61730, UL1703,
ISO9001:2008, ISO14001:2004

BYD Double Glass Linear Performance Warranty



Production Process



Wafer Production



Cell Production



Module Production



Module

About BYD

BYD (HK:1211), one of the world's top PV manufacturers, produces from wafer to module, committing to high quality sustainable products and continuous improvement. Integrating with Electrical Vehicles and Battery Energy Storage technology makes BYD the world-leading solution provider from energy generating to consumption and storage.

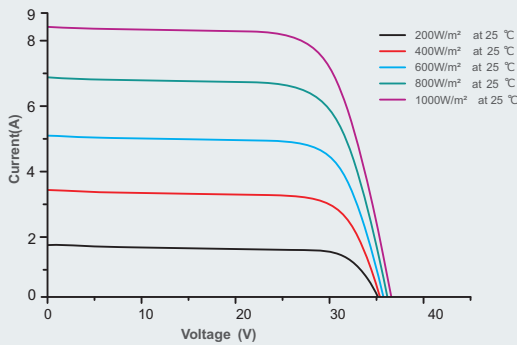
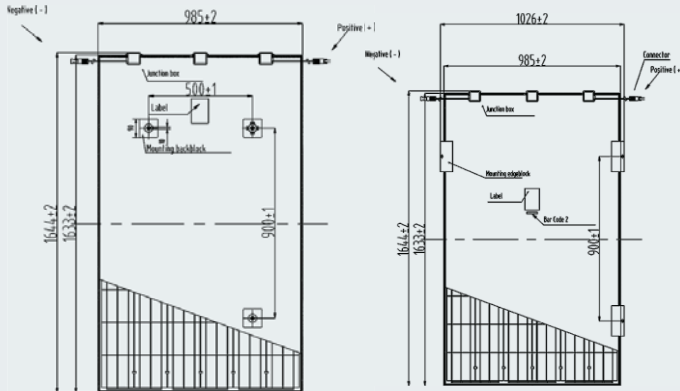
BYD COMPANY LIMITED HEADQUARTER

Add: No.3009, BYD Road, Pingshan, Shenzhen, 518118, P.R. China
Tel: +86-755-8988 8888
Fax: +86-755-8420 2222
Email: bydpv@byd.com
www.byd.com

BYD P6C-30-DG Series-3BB

Build Your Dreams

245W 250W 255W 260W 265W



Mechanical Specifications

Cell	Polycrystalline Silicon solar cells 156mm * 156 mm / 6 inch
No. of Cells	60 (6 *10) pcses
Dimension of Module	1644mm*985mm*29 mm / 64.7inch*38.9inch*1.14inch
Weight	27.5kg / 60.63 lbs
Front Glass	3.2 mm tempered glass with AR Coating
Junction Box	PV-ZH011C-1/PV-TS03-13/PVZH-011B-5
Plug Connector	IP67
Bypass-Diodes	3 pcses
Type of Connector	PV-ZH202/PV-TS01/PV-ZH202B
Cable Section Area	4 mm ² / 0.0062 Sq in
Cable Length	2 * 400 mm / 2 * 15.7 inch
Max. Fuse Current Rating	20 A

Temperature Coefficients

Nominal Operating Cell Temperature (NOCT)	43 °C ± 2 °C
Short-Circuit Current Temperature Coefficient	0.066%/°C
Open-Circuit Voltage Temperature Coefficient	-0.30%/°C
Peak Power Temperature Coefficient	-0.37%/°C

Package Information

Package	40' HC
Pcs / Pallet	34
Pallet / Container	24
Pcs / Container	816

BYD P6C-30-DG Series Electrical Specification

STC

Module	BYD 245P6C-30-DG	BYD 250P6C-30-DG	BYD 255P6C-30-DG	BYD 260P6C-30-DG	BYD 265P6C-30-DG
Item	245P6C-30-DG	250P6C-30-DG	255P6C-30-DG	260P6C-30-DG	265P6C-30-DG
Voc	37.45 V	37.76V	38.07 V	38.38V	38.69V
Vmp	29.85 V	30.13 V	30.40V	30.67 V	30.93 V
Isc	8.73A	8.81A	8.89 A	8.97 A	9.05 A
Imp	8.21 A	8.30A	8.39 A	8.48A	8.57A
Pmax	245 Wp	250 Wp	255 Wp	260 Wp	265 Wp
Module Efficiency	15.13%	15.44%	15.75%	16.06%	16.4%
Operating Temperature	-40°C~85°C				
Max.Fuse Current Rating	20 A				
Maximum System Voltage	1000VDC/1500VDC				
Power Tolerance	0~5 W				
Application Classes	Class A				

STC: IRRADIANCE 1000W/m², Module Temperature 25 °C, AM=1.5 Ave. efficiency reduction of 4.5% at 200W/m²

NOCT

Module	BYD 245P6C-30-DG	BYD 250P6C-30-DG	BYD 255P6C-30-DG	BYD 260P6C-30-DG	BYD 265P6C-30-DG
Item	245P6C-30-DG	250P6C-30-DG	255P6C-30-DG	260P6C-30-DG	265P6C-30-DG
Voc	35V	35.3V	35.6V	35.9V	36.2V
Vmp	27.9V	28.2V	28.5V	28.8V	29V
Isc	7.05A	7.12A	7.19A	7.25A	7.32A
Imp	6.62A	6.69A	6.75A	6.81A	6.88A
Pmax	184.9Wp	188.6Wp	192.3Wp	195.9Wp	199.8Wp

NOCT: open-circuit module operation temperature at 800W/m² irradiance, 20°C ambient temperature, 1m/s wind speed.